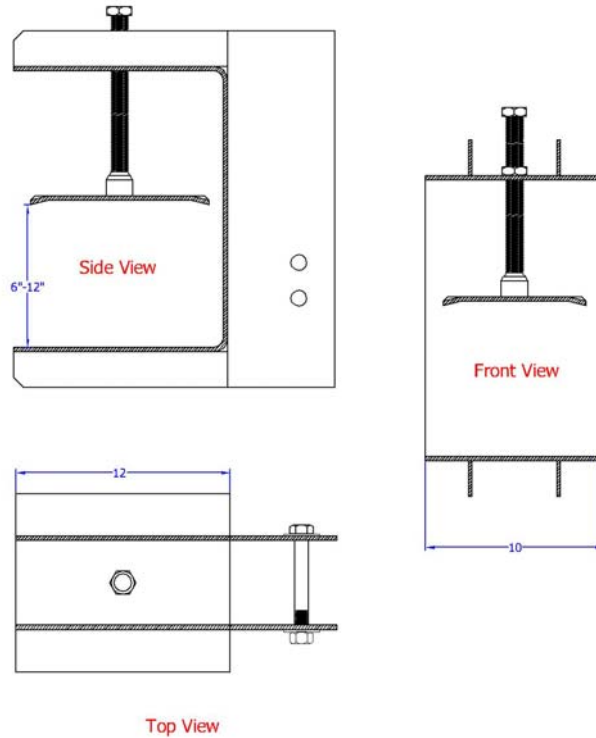




Slab Grabber Bracket (6" - 12" Slab)
Part# P-00700-SG

SPECIFICATIONS
PAGE 1 OF 1



DESCRIPTION

The slab grabber is a non-destructive clamp on mounting bracket for the P-00700 perimeter arm. It works on concrete slab edges from 6" to 12".

INSTRUCTIONS

1. Be sure the location you would like to install the anchorage is capable of supporting the maximum loads that may be applied to this anchor.
2. Open the slab grabber clamp wide enough to fit over the slab edge by turning the bolt counter-clockwise.
3. Slip grabber over slab all the way, with bolt side facing up.
4. Secure slab grabber by tightening bolt to 100ft/lbs of torque.

Warning: Be sure the slab grabber is seated all the way on to the slab and that the bolt is properly torqued before use.

GENERAL SPECIFICATIONS

Item	Description
Clamp	A36 HR Steel Plate, Powder Coated
Mounting Bolt	1" B7 Hardened Rod
Pole Bolt	3/4" Grade 5 Zinc Plated

Technical References:

- (1) Meets OSHA 1926 Subpart M for fall arrest netting when used as part of a complete system.
- (2) Meets ANSI A 10.11 drop test requirements for fall arrest netting when used as part of a complete system.
- (3) Break Strength—N/A