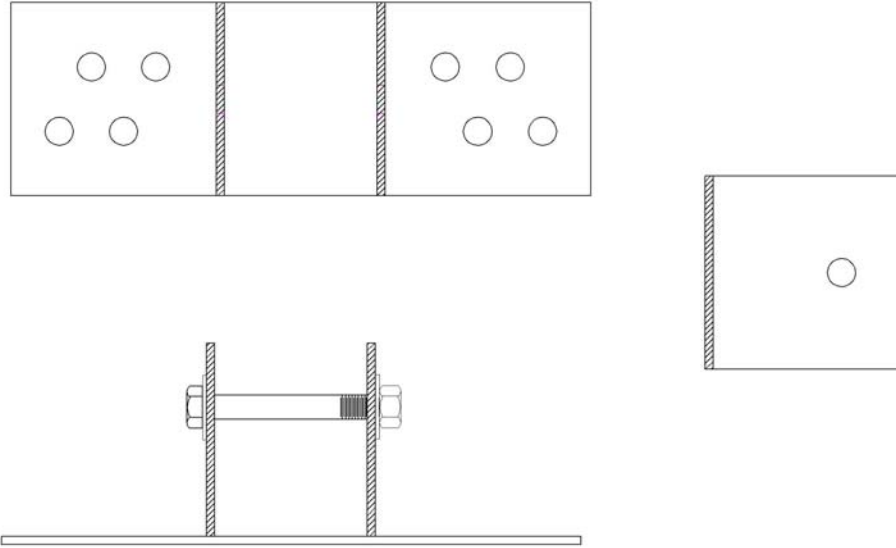




Bolt On Mounting Bracket
Part# P-00700-SB

SPECIFICATIONS
PAGE 1 OF 1



DESCRIPTION

The bolt on mounting bracket is used for mounting the P-00700 perimeter arm to concrete or steel. This bracket requires drilling holes in the column or slab for mounting bolts.

INSTRUCTIONS

1. Be sure the location you would like to install the anchorage is capable of supporting the maximum loads that may be applied to this anchor.
2. This bracket may be placed on the face of a column, on the surface of the slab or on the leading edge of the slab. Position the bracket to line up with the desired pole location on your layout so that the tabs are always left and right.
3. Drill (4) holes into the mounting structure, (2) on each side of the bracket. Any two holes on each side may be used, the holes are staggered in case rebar is encountered while drilling. Match hole diameter to mounting hardware requirements.
4. Tighten bolts or nuts to hardware manufacturer torque specifications.

GENERAL SPECIFICATIONS

Item	Description
Bracket	ASTM A36 HR Steel, Powder Coated
Mounting Bolt	3/4" Grade 5, Zinc Plated

ACCEPTABLE HARDWARE CONFIGURATIONS

Surface	Acceptable Mounting Options
Concrete	<ol style="list-style-type: none"> 1. Threaded Rod and Epoxy—Minimum 3/4" B7 or better rod and ITW Redhead C6 Epoxy or equal, minimum 3" embedment. 2. Wedge Anchor—3/4" diameter, minimum 3-1/4" embedment. ITW Redhead Trubolt or equal. 3. Drop In Anchor and Bolt—ITW Redhead Multi-Set II Type RL or equal and 3/4" Grade 5 or better x 2" Bolt, minimum 4" embedment.
Steel	3/4" Grade 5 or Better Bolts

Technical References:

- (1) Meets OSHA 1926 Subpart M for fall arrest netting when used as part of a complete system.
- (2) Meets ANSI A 10.11 drop test requirements for fall arrest netting when used as part of a complete system.
- (3) Break Strength—N/A