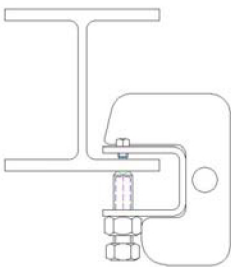


**DESCRIPTION**

The flange clamp is great for attaching to a C-channel or other single flange anchor point, or when both flanges of an I-beam cannot be reached.

**INSTRUCTIONS**

1. Place clamp over flange as shown.



2. Tighten bolt to 90 ft/lbs

**GENERAL SPECIFICATIONS**

tem	Description	Tested At
Bolt	1"-8 Grade 8	64,000 tensile
Steel	A36 - Powder Coated	N/A

Capacity—1 worker, max weight 400lbs including tools and equipment

Technical References: Meets OSHA 1926 Subpart M, ANSI Z359.1-2007