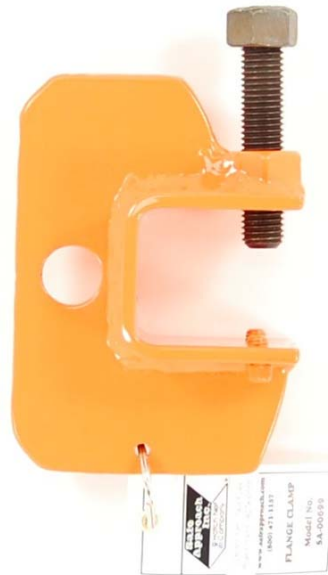


# USER INSTRUCTION MANUAL & SPECIFICATION FOR THE **FLANGE CLAMP** **P-00699**



**GENERAL DESCRIPTION:** The Safe Approach Flange Clamp is a 5,000 lb anchorage point for attaching to structural steel when only one flange is available or accessible of an I-beam flange.



## **WARNING**

The purchaser/user is solely responsible for attaching the Safe Approach Anchor to a proper anchorage point. The structural member must be of solid material, sound construction and capable of withstanding 5,000lbs. The attachment point must meet all Federal, State and Local regulations and OSHA 1926.500 (Fall Protection). The purchaser/user is also solely responsible for obtaining and using a harness and connecting device, and for enforcing safe work practices when using this equipment.

# **HELPLINE: (800) 471-1157**

# Flange Clamp Instructions and Specification

## WARNING

If the unit fails the visual inspection, do not use. Return to Safe Approach for repair. DO NOT ATTEMPT TO REPAIR THE UNIT.

## WARNING

Failure to Install, Use and/or Remove Safe Approach safety equipment in a safe and workmanlike manner can result in serious injury or death.

## WARNING

It is critical to properly torque the mounting screw on the flange clamp. Torque screw to 75 ft./lbs. Recheck frequently during prolonged usage.

1. Read and understand all instructions, warnings, cautions, notes, etc. regarding the safe use of Safe Approach's safety equipment.
2. When installing, using and removing Safe Approach's equipment, Federal, State and Local regulations must be followed. These include, but are not limited to: OSHA, ANSI, and the U.S. Army Corps of Engineers.
3. Safe Approach safety equipment is designed and tested as a system. Never use or mix components that have not been designed and tested for use with the system. Contact Safe Approach if you are unsure (800-471-1157)
4. Install and remove Safe Approach safety equipment in a safe and workmanlike manner.

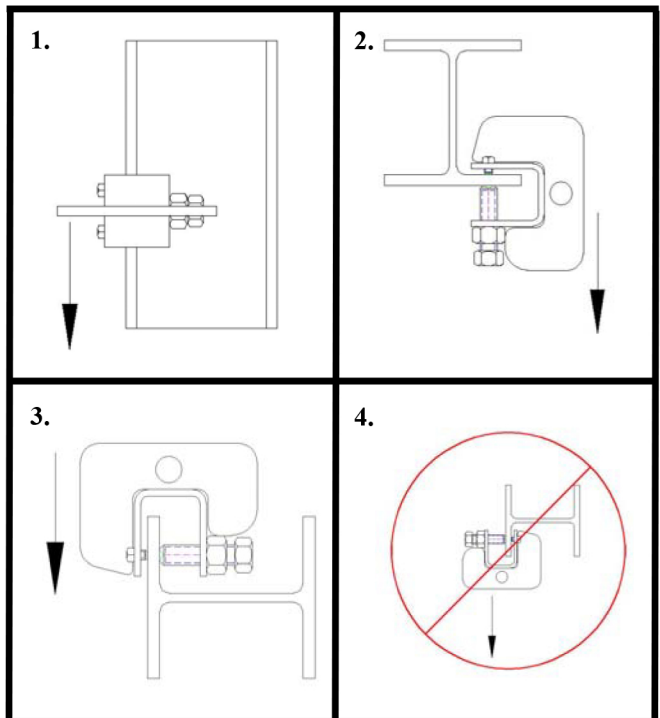
## I. INSTALLATION

- A. Be sure assembly is free of damage, including bends and welds.
- B. Each application will be different. You must plan for and follow safe work practices for each installation and removal of Safe Approach Safety Equipment.
- C. Always use the proper safety equipment when installing, using and removing Safe Approach Equipment. This safety equipment can include safety glasses, hearing protection, independent fall protection, etc.
- D. If you have any questions regarding the safe installation, use or removal of Safe Approach Equipment, please call Safe Approach's helpline at (800) 471-1157.

E. Attach the unit to a proper anchorage point which is in line with and above the user (perpendicular to the edge). Never use an anchorage point which is far to the left or right of the user in order to minimize fall swing type injuries from the pendulum effect after a fall.

F. Before attaching the flange clamp to the structure inspect the mounting set screw to make sure the cup point is still in good condition. Once the "cup" point edges begin to become rounded, replace the screw with a new one from Safe Approach.

G. Slip the flange clamp over the flange and tighten the set screw to 75 ft./lbs. of torque. See the chart below for acceptable mounting configurations. Figures 1-3 are acceptable load directions, figure 4 is not.



H. Once the anchor is properly installed, attach a connecting device to the connection point provided.

## WARNING

It is critical to properly torque the mounting screw. Failure to do so may result in the clamp slipping off the structural member during an impact. Always use a torque wrench when tightening the mounting screw to be sure you achieve 90 ft./lbs.

**II. INSPECTION:**

The following inspections are required before each use of the product.:

1. Perform visual inspection before each use. Inspect the steel for deformation or other damage, including cracks.
2. Inspect steel and mounting screws for excessive corrosion.
3. Inspect large mounting screw cup point. Be sure cup still has sharp edges. If the cup point edges start to become rounded, remove the clamp from service and replace the mounting screw from Safe Approach.

**III. MAINTENANCE:**

1. The anchor can be cleaned with mild soap and water solution. Do not allow the anchor to remain wet as corrosion can occur on the mounting screw.
2. Do not use oil or grease of any kind to lubricate the mounting screw. A small amount of anti-seize compound can be applied to the threads. Do not allow anti-seize to come into contact with the cup point of the screw.

**WARNING**

Whenever a unit has arrested an actual fall, it must be returned to Safe Approach for disassembly, inspection, and repair, or replacement of parts required. **DO NOT DISMANTLE UNIT.**

**IV. SPECIFICATION**

The Safe Approach Flange Clamp meets or exceeds OSHA 1926.502 (d) (15).

Capacity: 1 person

Manufactured by:

Safe Approach Inc.  
206 Mechanic Falls Road  
Poland, ME 04274

Phone: (800) 471-1157  
(207) 345-9900  
Fax: (207) 345-9100

Email: [sales@safeapproach.com](mailto:sales@safeapproach.com)

website: [www.safeapproach.com](http://www.safeapproach.com)